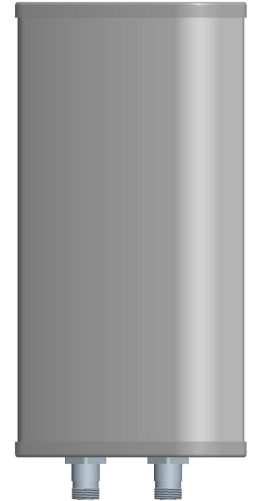


L7PB6512DR

698-960 MHz 12dBi X Pol Panel Antenna

Electrical Specifications

Frequency Range (MHz)	698-806	806-960
Horizontal Half-power Beamwidth (°)	67	62
Vertical Half-power Beamwidth (°)	33	30
Gain (dBi)	11.5	12
Polarization	$\pm 45^\circ$	
Isolation(dB)	≥ 25	
Front to Back Ratio (dB)	≥ 25	
VSWR	≤ 1.8	
Average Power, Maximum (W)	100	
Impedance (Ω)	50	



Mechanical Specifications

Dimensions (mm)	600×320×110
Net Weight (kg)	8.5 (installation kit included)
Connector	N Female

Environmental Specifications

Application	Outdoor
Operating Temperature (°C)	-40 to +70 (-40 to 158°F)
Humidity (%)	5 to 95
Survival Wind Velocity (m/s)	60

Mounting Specifications

MOUNTING BRACKETS ARE INCLUDED UNLESS OTHERWISE SPECIFIED

Mounting Mast Diameter (mm)	Φ 50 to 75
-----------------------------	-----------------