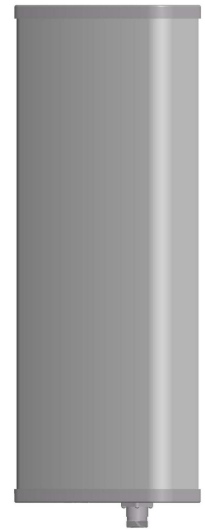


# L727PB651214VT

698-960 / 1710-2690MHz 12/14dBi Panel Antenna

## Electrical Specifications

Frequency Range (MHz)	698-960	1710-2690
Horizontal Half-power Beamwidth (°)	65 ± 5	65 ± 5
Vertical Half-power Beamwidth (°)	30 ± 3	18 ± 3
Gain (dBi)	12 ± 1	14 ± 1
Polarization	Vertical	
Front to Back Ratio (dB)	≥25	≥25
VSWR	≤1.5	
Average Power, Maximum (W)	100	
Impedance (Ω)	50	



## Mechanical Specifications

Dimensions (mm)	600×320×110
Net Weight (kg)	8.6 (installation kit included)
Connector	N Female

## Environmental Specifications

Application	Outdoor
Operating Temperature (°C)	-40 to +70 (-40 to 158°F)
Humidity (%)	5 to 95
Survival Wind Velocity (m/s)	60

## Mounting Specifications

MOUNTING BRACKETS ARE INCLUDED UNLESS OTHERWISE SPECIFIED

Mounting Mast Diameter (mm)	Φ 50 to 75
-----------------------------	------------