

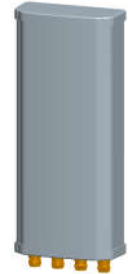
W44PB3015FR

4400-5000 MHz 30° 15dBi V&H Pol Panel Antenna



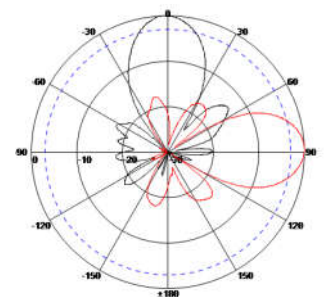
Electrical Specifications

Frequency Range (MHz)	4400-5000
Horizontal Half-power Beamwidth (°)	30±5
Vertical Half-power Beamwidth (°)	30±5
Gain (dBi)	2×15±1
Polarization	V+H
Cross-polar discrimination (dB)	≥15(±60° ≥10)
Isolation(dB)	≥25
Front to Back Ratio (dB)	≥25
VSWR	≤1.5
Average Power, Maximum (W)	100
Impedance (Ω)	50



Mechanical Specifications

Dimensions (mm)	300×128×58
Net Weight (kg)	2 installation kit included)
Connector	4×N Female



Radiation Pattern

Environmental Specifications

Application	Outdoor
Operating Temperature (°C)	-40 to +70 (-40 to 158°F)
Humidity (%)	5 to 95
Survival Wind Velocity (m/s)	60

Mounting Specifications

MOUNTING BRACKETS ARE INCLUDED UNLESS OTHERWISE SPECIFIED

Mounting Mast Diameter (mm)	Φ 35to 70
-----------------------------	-----------

Decipro Technologies Ltd., B2A Building, New Light Industrial Base, Luocun S Ave. Nanhai, Foshan, Guangdong, China 528226
Tel +86(0)757 8355 4087 Email sales@deciprotech.com Website www.deciprotech.com