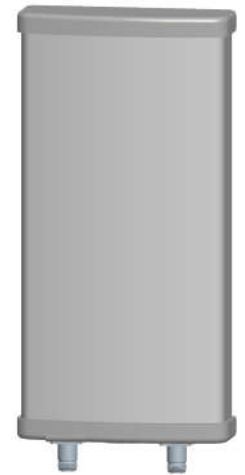


# W45BS3520DR

4400-5000 MHz 20dBi Dual Polarization Sector Antenna, 35 HBW

## Electrical Specifications

Frequency Range (MHz)	4400-5000
Horizontal Half-power Beamwidth (°)	35±5
Vertical Half-power Beamwidth (°)	6±2
Gain (dBi)	20±1
Polarization	±45°
VSWR	≤2.0
Front to Back Ratio (dB)	≥25
Isolation (dB)	≥25
Cross-polar Discrimination (dB)	≥15
Average Power, Maximum (W)	50
Impedance (Ω)	50
Lightning Protection	DC Ground



## Mechanical Specifications

Dimensions (mm)	600×167×55
Packing Dimension (mm)	680×220×140
Net Weight (kg)	3.2(installation kit included)
Radome Material	UV Resistant UPVC
Radome Color	Grey
Connector	N Female (2×)

## Environmental Specifications

Application	Outdoor
Operating Temperature (°C)	-40 to +70 (-40 to 158°F)
Humidity (%)	5 to 95
Survival Wind Velocity (km/h)	200

## Mounting Specifications

MOUNTING BRACKETS ARE INCLUDED UNLESS OTHERWISE SPECIFIED

Mounting Mast Diameter (mm)	Φ 35 to 75
Mechanical Tilt Range (°)	0 ~ 15