

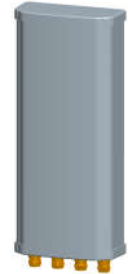
W50PB3014FR

4800-5600 MHz 30° 13.5dBi V&H Pol Panel Antenna



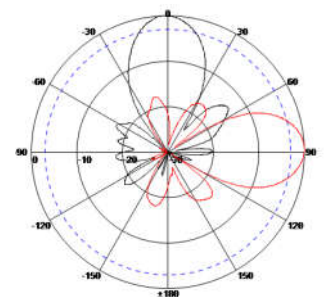
Electrical Specifications

Frequency Range (MHz)	4800-5600
Horizontal Half-power Beamwidth (°)	35 ± 5
Vertical Half-power Beamwidth (°)	35 ± 5
Gain (dBi)	2×13.5 ± 1
Polarization	± 45
Cross-polar discrimination (dB)	≥15 (± 60° ≥ 10)
Isolation (dB)	≥ 25
Front to Back Ratio (dB)	≥ 23
VSWR	≤ 2.0
Average Power, Maximum (W)	50
Impedance (Ω)	50



Mechanical Specifications

Dimensions (mm)	300×128×58
Net Weight (kg)	2 installation kit included)
Connector	4×N Female



Radiation Pattern

Environmental Specifications

Application	Outdoor
Operating Temperature (°C)	-40 to +70 (-40 to 158°F)
Humidity (%)	5 to 95
Survival Wind Velocity (m/s)	60

Mounting Specifications

MOUNTING BRACKETS ARE INCLUDED UNLESS OTHERWISE SPECIFIED

Mounting Mast Diameter (mm)	Φ 35 to 70
-----------------------------	------------

Decipro Technologies Ltd., B2A Building, New Light Industrial Base, Luocun S Ave. Nanhai, Foshan, Guangdong, China 528226
Tel +86(0)757 8355 4087 Email sales@deciprotech.com Website www.deciprotech.com