

V1HZ9W-4

138-174 MHz 4 Elements Exposed Dipole Antenna, Quarter Wave Design, Offset Patterns

Electrical Specifications

Frequency Range (MHz)	138-174
Bandwidth (MHz)	36
Horizontal Half-power Beamwidth (°)	210
Vertical Half-power Beamwidth (°)	18
Gain (dBi)	9.6
Polarization	Vertical
VSWR	≤1.8
Boom Wave Length Spacing	1/4 λ
Average Power, Maximum (W)	300
Impedance (Ω)	50
Lightning Protection	DC Ground

Mechanical Specifications

Length (cm)	570
Net Weight (kg)	25.5 (installation kit included)
Radiator Material	Aluminum Alloy
Number of Radiators	4
Connector	N Female or Customized

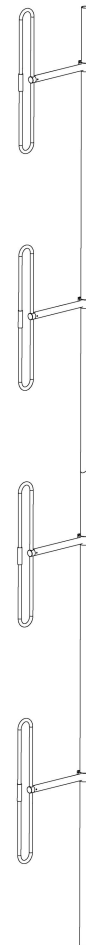
Environmental Specifications

Application	Outdoor
Operating Temperature (°C)	-40 to +70 (-40 to 158°F)
Humidity (%)	5 to 95
Survival Wind Velocity (km/h)	160

Mounting Specifications

MOUNTING BRACKETS ARE INCLUDED UNLESS OTHERWISE SPECIFIED

Mounting Mast Diameter (mm)	Φ 40 to 50
-----------------------------	------------



VHF ANTENNAS
Omni