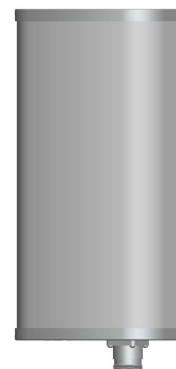


W3549PB6515VR

3300-3800&4400-5000 MHz 15/15dBi V Pol Panel Antenna

Electrical Specifications

Frequency Range (MHz)	3300-3800	4400-5000
Horizontal Half-power Beamwidth (°)	65 ± 5	65 ± 5
Vertical Half-power Beamwidth (°)	≥12	≥12
Gain (dBi)	15 ± 1	15 ± 1
Polarization	Ver.	
Front to Back Ratio (dB)	≥25	
VSWR	≤2.0	
Average Power, Maximum (W)	100	
Impedance (Ω)	50	



Mechanical Specifications

Dimensions (mm)	450×160×80
Net Weight (Kg)	2 (installation kit included)
Connector	1×N Female

Environmental Specifications

Application	Outdoor
Operating Temperature (°C)	-40 to +70 (-40 to 158°F)
Humidity (%)	5 to 95
Survival Wind Velocity (m/s)	60

Mounting Specifications

MOUNTING BRACKETS ARE INCLUDED UNLESS OTHERWISE SPECIFIED

Mounting Mast Diameter (mm)	Φ 40 to 50
-----------------------------	------------