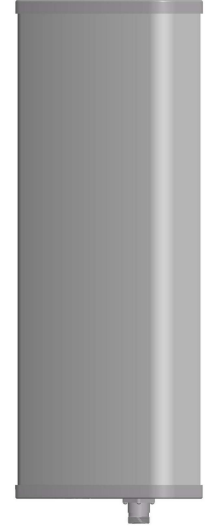


L72758PB121417VT

698-960 / 1518-2690/5150-5850 MHz 12/14/17dBi Panel Antenna

Electrical Specifications

Frequency Range (MHz)	698-960	1518-2690	5150-5850
Horizontal Half-power Beamwidth (°)	65	65	65
Vertical Half-power Beamwidth (°)	30	17	8
Gain (dBi)	12	14	17
Polarization	Vertical		
Front to Back Ratio (dB)	≥23	≥25	≥28
VSWR	≤2.0		
Average Power, Maximum (W)	100		
Impedance (Ω)	50		



Mechanical Specifications

Dimensions (mm)	950×320×110
Net Weight (kg)	8.5 (installation kit included)
Connector	N Female

Environmental Specifications

Application	Outdoor
Operating Temperature (°C)	-40 to +70 (-40 to 158°F)
Humidity (%)	5 to 95
Survival Wind Velocity (m/s)	60

Mounting Specifications

MOUNTING BRACKETS ARE INCLUDED UNLESS OTHERWISE SPECIFIED

Mounting Mast Diameter (mm)	Φ 50 to 75
-----------------------------	------------