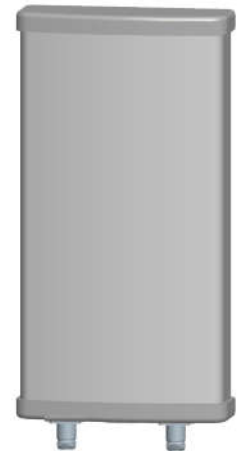


WNPB12014VHR

2400-2500&5150-5875 MHz 14dBi V&H Pol Panel Antenna

Electrical Specifications

Frequency Range (MHz)	2400-2500	5150-5850
Horizontal Half-power Beamwidth (°)	120 ± 10	120 ± 10
Vertical Half-power Beamwidth (°)	15 ± 3	15 ± 3
Gain (dBi)	13.5 ± 1	13.5 ± 1
Polarization	Ver.&Hor.	
Isolation (dB)	≥25	
Front to Back Ratio (dB)	≥25	
VSWR	≤1.8	
Average Power, Maximum (W)	100	
Impedance (Ω)	50	



Mechanical Specifications

Dimensions (mm)	500×167×55
Net Weight (Kg)	2.8(installation kit included)
Connector	2×N Female

Environmental Specifications

Application	Outdoor
Operating Temperature (°C)	-40 to +70 (-40 to 158°F)
Humidity (%)	5 to 95
Survival Wind Velocity (m/s)	60

Mounting Specifications

MOUNTING BRACKETS ARE INCLUDED UNLESS OTHERWISE SPECIFIED

Mounting Mast Diameter (mm)	Φ 40 to 50
-----------------------------	------------